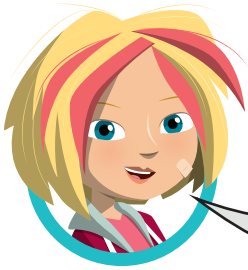


TOP-CLASS TRANSPORT



TASK 1: QUICK QUIZ

IF WE'RE GOING TO FIGURE OUT WHERE WE'RE GOING, WE HAVE TO KNOW WHERE WE'VE BEEN! USE YOUR RESEARCH SKILLS TO FIND THE ANSWERS TO THE FOLLOWING QUESTIONS, ALL ABOUT THE HISTORY OF TRANSPORT:

When did the first railway line in Britain open?	
What is the length of the longest paved runway in the world?	
How many passengers can fit in the Youngman JNP6280G Bus, one of the largest buses in history?	
Which city has the most taxi cabs?	
What is the top speed of the SNCF TGV POS - the fastest commuter train in the world?	
How many lanes are there on the 'Katy Freeway', the world's widest highway?	
How many stations are there on the London Underground?	
What is the height of the Tanggula Pass, the highest railway in the world?	

TASK 4:

TRANSPORT TOP TRUMPS

Use these templates to create a 'Top Trumps' style info card for four of the different methods of transport used in Middletown, giving them a rating from one to five in each key area:

<div>TRANSPORT TOP TRUMPS</div> <div></div> <div>SKATEBOARDING</div> <div><div>SPEED</div><div>SAFETY</div><div>COMFORT</div><div>EXERCISE</div></div> <div><div><div></div><div></div><div></div><div></div></div><div><div></div><div></div><div></div><div></div></div><div><div></div><div></div><div></div><div></div></div><div><div></div><div></div><div></div><div></div></div></div>	<div>TRANSPORT TOP TRUMPS</div> <div></div> <div></div> <div><div>SPEED</div><div>SAFETY</div><div>COMFORT</div><div>EXERCISE</div></div> <div><div><div></div><div></div><div></div><div></div></div><div><div></div><div></div><div></div><div></div></div><div><div></div><div></div><div></div><div></div></div><div><div></div><div></div><div></div><div></div></div></div>	<div>TRANSPORT TOP TRUMPS</div> <div></div> <div></div> <div><div>SPEED</div><div>SAFETY</div><div>COMFORT</div><div>EXERCISE</div></div> <div><div><div></div><div></div><div></div><div></div></div><div><div></div><div></div><div></div><div></div></div><div><div></div><div></div><div></div><div></div></div><div><div></div><div></div><div></div><div></div></div></div>	<div>TRANSPORT TOP TRUMPS</div> <div></div> <div></div> <div><div>SPEED</div><div>SAFETY</div><div>COMFORT</div><div>EXERCISE</div></div> <div><div><div></div><div></div><div></div><div></div></div><div><div></div><div></div><div></div><div></div></div><div><div></div><div></div><div></div><div></div></div><div><div></div><div></div><div></div><div></div></div></div>
--	---	---	---

TOP-CLASS TRANSPORT

TASK 4:

THE VEHICLE OF THE FUTURE

Design a vehicle that can travel over land, water, AND air, then fill and link the explanation boxes to its special features.

The form consists of a large central grid area for drawing. Surrounding the grid are four rounded rectangular boxes, each containing three horizontal lines for text. These boxes are positioned at the top-left, top-right, bottom-left, and bottom-right corners of the grid area.