

# GEO SQUAD

GET KIDS INTO SURVEY  
#4  
GETKIDSINTOSURVEY.COM  
@GETKIDSINTOSURVEY

STORY: MATHEW SULLIVAN/ART: MAREK JAGUCKI

Well... that took less convincing than I anticipated.



I'M CONTROLLING THIS THING **WITH MY MIND!** I JUST **THINK** IT AND IT **DOES** IT! HEY, ROBOT ME, FLY **LEFT!**



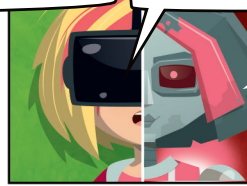
IT'S A **NEURAL CONNECTION** -- MUST BE PART OF THE **TIMENET SYSTEM**. I'VE GOT **SOOO** MANY QUESTIONS ABOUT THIS TECH.



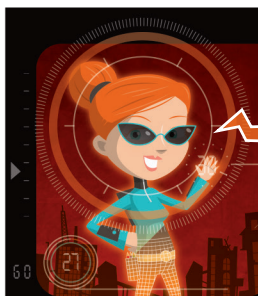
YOUR **NERDY KNOWLEDGE HUNT** WILL HAVE TO WAIT, KWAME -- WE'RE COMING UP **FAST** ON THE CITY... AND IT'S IN A **BAD WAY**.



LOOK AT THIS PLACE - WHERE DO WE EVEN **START?** IT'S A TOTAL WREC... WAIT. **GUYS?** I THINK - I THINK THERE'S SOMEONE **INSIDE** MY **ROBOT'S HEAD!**



INDEED THERE IS! HELLO EVERYONE! IT'S **SO NICE** TO HAVE SOMEONE NEW TO TALK TO! ALLOW ME TO **INTRODUCE** MYSELF...



MY NAME IS **G.E.O G.I.N.G.E.R** - GENERAL EXPERT ON GLOBALLY INTEGRATED NETWORKED **GEOGRAPHICAL ELECTRONIC** RESOURCES. I AM YOUR VIRTUAL ASSISTANT. VERY PLEASED TO MEET YOU ALL!

SO. MANY. QUESTIONS.



IS ONE OF THEM **'WHY'S OUR VIRTUAL ASSISTANT'S NAME SO VERY LONG?'** BECAUSE IF IT ISN'T, IT SHOULD BE.

SO GEO-JARVIS - WHICH PART OF THE CITY THAT'S FALLING APART DO YOU THINK WE SHOULD HEAD TO FIRST?



I HAVE PERFORMED A FULL SCAN USING THE **LIDAR** TECH INSIDE YOUR MECHS. I'LL PROJECT THE RESULTS ONTO THE CITY THROUGH YOUR **MIXED REALITY LENS**.



HOW DID THINGS GET THIS **BAD?** AND HOW DO WE START TO **FIX** IT?



WELL - YOU COULD START BY SAVING YOUR **SCHOOL** - THAT HANGING HOUSE IS ABOUT TO FALL... RIGHT ON TOP OF IT.



WE'RE ON IT!

TO BE CONTINUED NEXT MONTH...